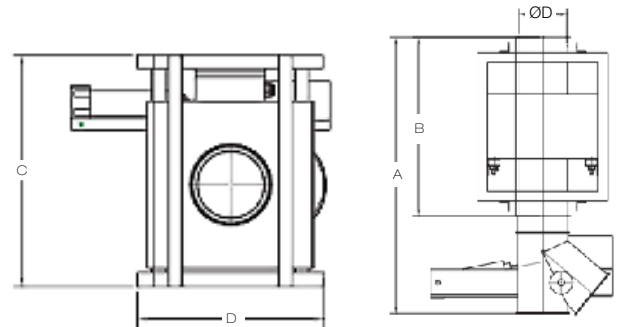




# Gravity Feed Metal Detectors

Series: GF

**CASSEL**



## Application

Gravity feed type metal detectors are used in gravity feed pipes and provide the highest performance in detecting magnetic and non-magnetic metals. The bulk material falls through the metal detector. With the reject flap, even the smallest metal objects are separated out of the product stream promptly. A maintenance free design and high quality construction, the Cassel GF metal detector reliably performs in the most challenging industrial environments.

## Operation

Once installed in a gravity feed pipeline, bulk material falls through the metal detector. If any metallic contaminant, magnetic or non-magnetic is detected, the reject flap engages to promptly separate and exit the contaminant from the product stream.

## Standard Features

- Full 2 year warranty on complete system—giving you peace of mind
- Hygienic food industry design—ensures compliance with good manufacturing principles
- Harsh environment rating as standard on sensor head—ensures the unit remains stable whatever the environment
- Semi-flexible aperture lining—resists thermal shock due to temperature change and protects the sensor for maximum operating life and minimum down time
- All solid state electronics housed on one main board—ensures years of reliable performance offering the lowest cost of ownership on the market
- Intuitive menu structure—simple operation for reliable performance, no expensive service calls to adjust settings
- Full HACCP compliance—demonstrates your due diligence, ensures you and your customers are protected
- Full pre-sale applications and custom design service—making sure we provide the right solution first time
- Satisfaction guarantee—put simply, the unit will perform as specified or we will take it back for a full refund

## GRAVITY FEED MD - Selection Guide

ØD	ØD (mm)	A	B	C	D	A (mm)	B (mm)	C (mm)	D (mm)	TYPICAL MATERIAL FLOW ft <sup>3</sup> /h	TYPICAL MATERIAL FLOW m <sup>3</sup> /h	APPROXIMATE SENSITIVITY Ø MM		
												FE	AI	SS
4"	100	23.6"	15.8"	17.7"	12.5"	600	400	450	318	700	20	0.5	0.7	0.8
5"	120	28.4"	19.3"	17.7"	13.3"	720	490	450	338	1000	28	0.7	0.9	1.0
6"	150	33.5"	21.7"	19.8"	15.8"	850	550	502	400	1500	42	0.8	1.1	1.3
8"	200	47.2"	31.1"	24.2"	20"	1200	790	615	508	2600	74	1.2	1.6	1.8
10"	250	54.9"	36.8"	31.5"	26"	1395	935	800	685	4000	113	1.5	2.0	2.3
12"	300	63.2"	43.3"	37"	31.5"	1605	1100	940	800	5800	164	1.9	2.4	3.0
14"	350	76.2"	49.8"	40.2"	34.7"	1935	1265	1020	880	7900	224	2.2	2.7	3.3
16"	400	82.7"	53.2"	42.9"	37.4"	2100	1350	1090	950	10300	292	2.4	2.9	3.6

\*Specifications subject to change

Series GF & GFc - Compact Version 2.0 © MPI

**MPI**

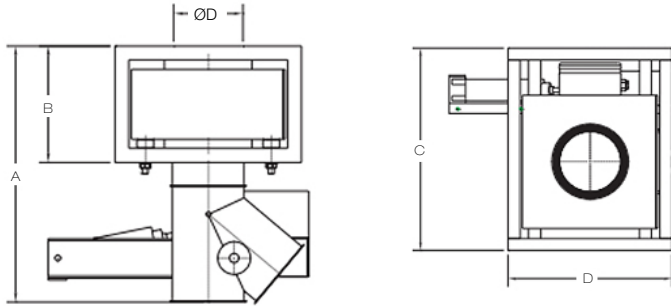
683 Town Center Drive, Highland, MI 48356 | p. 800.544.5930 | f. 248.887.6100  
 info@mpimagnet.com | www.mpimagnet.com



# Gravity Feed Metal Detectors

Series: GFc Compact

CASSEL



## Application

Gravity feed type metal detectors are used in gravity feed pipes and provide the highest performance in detecting magnetic and non-magnetic metals. The bulk material falls through the metal detector. With the reject flap, even the smallest metal objects are separated out of the product stream promptly.

The GF Compact has a low assembly height and is especially designed for limited space applications. Due to the ultra-compact sensor head, the metal detection performance is slightly lower compared to the full size model.

## Operation

Once installed in a gravity feed pipeline, bulk material falls through the metal detector. If any metallic contaminant, magnetic or non-magnetic is detected, the reject flap engages to promptly separate and exit the contaminant from the product stream.

## Standard Features

- Full 2 year warranty on complete system—giving you peace of mind
- Hygienic food industry design—ensures compliance with good manufacturing principles
- Harsh environment rating as standard on sensor head—ensures the unit remains stable whatever the environment
- Semi-flexible aperture lining—resists thermal shock due to temperature change and protects the sensor for maximum operating life and minimum down time
- All solid state electronics housed on one main board—ensures years of reliable performance offering the lowest cost of ownership on the market
- Intuitive menu structure—simple operation for reliable performance, no expensive service calls to adjust settings
- Full HACCP compliance—demonstrates your due diligence, ensures you and your customers are protected
- Full pre-sale applications and custom design service—making sure we provide the right solution first time
- Satisfaction guarantee—put simply, the unit will perform as specified or we will take it back for a full refund

## GRAVITY FEED COMPACT MD - Selection Guide

ØD	ØD (mm)	A	B	C	D	A (mm)	B (mm)	C (mm)	D (mm)	TYPICAL MATERIAL FLOW ft <sup>3</sup> /h	TYPICAL MATERIAL FLOW m <sup>3</sup> /h	APPROXIMATE SENSITIVITY Ø MM		
												FE	AI	SS
4"	100	17.7"	7.9"	17.7"	12.5"	450	200	450	318	700	20	0.7	1.0	1.1
5"	120	20.9"	9.8"	17.7"	13.3"	530	250	450	338	1000	28	1.0	1.2	1.4
6"	150	23.6"	9.8"	19.8"	15.8"	600	250	502	400	1500	42	1.1	1.5	1.8
8"	200	35.8"	11.8"	24.2"	20"	910	300	615	508	2600	74	1.6	2.2	2.4
10"	250	41.3"	15.4"	31.5"	26"	1050	390	800	641	4000	113	2.0	2.7	3.1
12"	300	43.1"	15.4"	37"	31.5"	1095	390	940	800	5800	164	2.6	3.2	4.1

\*Specifications subject to change

Series GF & GFc - Compact Version 2.0 © MPI

**MPI**

683 Town Center Drive, Highland, MI 48356 | p. 800.544.5930 | f. 248.887.6100  
info@mpimagnet.com | www.mpimagnet.com