



Magnets | Material Handling
Electronic Inspection | Service

Magnetic Tubes

Series: MT



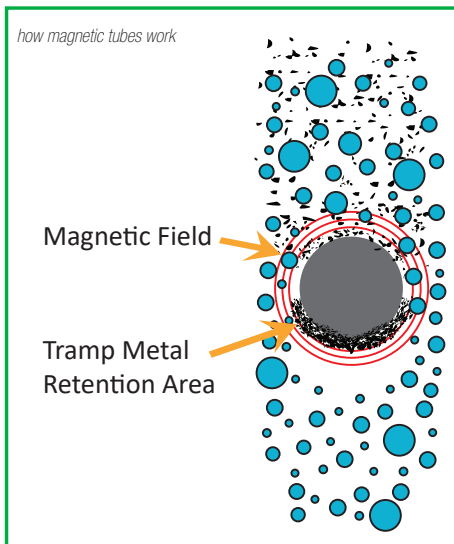
- 1 All tube ends are fully welded for the highest durability and sanitary design, no crimped or mechanically sealed end plugs
- 2 Heavy wall thickness tube for high durability, higher performance thin tubes available and summarized in table below
- 3 Multiple designs to fit every budget and performance requirement

Exclusive coatings available for nonstick and abrasive applications
- 4 Made in the USA

Industry leading lead time for delivery as short as 24 hours for custom sizes and configurations

Magnetic Tube Performance					
Model	1" Ceramic	1" REN	1" Hi-G	1" Thin Wall**	3" Hi-G
1/4" Ball Pull Values*	0.3 lbs	5.0 lbs	5.8 lbs	6.5 lbs	6 lbs
1/2" Ball Pull Values*	1.2 lbs	13.0 lbs	16.0 lbs	16.5 lbs	26 lbs
Gauss Value*	2,500	10,000	10,800	12,000	12,000
Tube Durability	● ● ●	● ● ●	● ● ●	●	● ● ●
Price	●	● ●	● ● ●	● ● ●	● ● ●

* Pull values are average on contact and gauss values are peak on contact.
** Always consult a magnet professional before selecting thin wall tubes. Thin wall tubes are not recommended for products with abrasive characteristics or in manual clean designs such as grates.



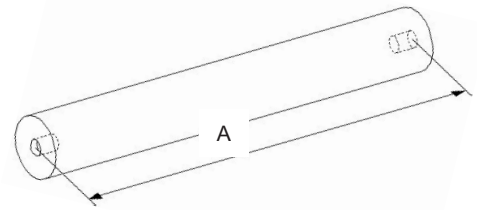
Magnet Material Maximum Operating Temperatures			
	REN	Hi-G**	Thin Wall***
Standard	176° @ 52-55 MGOe		
High Temp 1	248° @ 48 MGOe		
High Temp 2	356° @ 38 MGOe		
High Temp 3	662° @ 30 MGOe		

* Degrees are in Fahrenheit
** High Temp magnets will have lower pull values versus standard temp design due to lower MGOe material

*Specifications subject to change

Magnetic Tube Selection Guide

MODEL NUMBER	TUBE LENGTH "A"		APPROX. WEIGHT	
	IN	MM	LBS	KG
MT-104	4.0	102	0.75	0.3
MT-106	6.0	152	1.12	0.5
MT-108	8.0	203	1.50	0.7
MT-110	10.0	254	1.87	0.9
MT-112	12.0	305	2.24	1.0
MT-114	14.0	356	2.62	1.2
MT-116	16.0	406	2.99	1.4
MT-118	18.0	457	3.37	1.5
MT-120	20.0	508	3.74	1.7
MT-122	22.0	559	4.11	1.9
MT-124	24.0	610	4.49	2.0



Magnetic Tube Selectable Options

Tube Diameter:

- **1" diameter**
- 3" diameter (available for self-clean and quick clean only)

Tube Length:

Available lengths from 4" to 36" in any increment. For sizes over 36", MPI reviews per application to ensure that product will meet life expectancy requirements.

Material Construction:

- **304 Stainless Steel (standard)**
- 316 Stainless Steel

Magnetic Tubes:

- Ceramic
- **REN Rare Earth (standard)**
- Hi-G high performance Rare Earth
- TW Thin Wall high performance Rare Earth

Magnetic Material Temperature:

- 400° @ 3.5 MGO (ceramic)
- **176 F @ 52-55 MGOe (rare earth) (standard)**
- 248° @ 48 MGO (rare earth)
- 356° @ 38 MGO (rare earth)
- 662° @ 30 MGO (rare earth)

Tube Coatings:

- **Stainless steel with no coating (standard)**
- Synergistic Coating [reference datasheet Synergistic Coating]

Washdown / Liquid Tight Design:

- **Non-washdown for dry applications (standard)**
- Washdown design with liquid tight tube for liquid or wash-down applications

**Specifications subject to change*

MPI can manufacture your tube with any end plug required for easy installation into your application.

Tube end design (end 1):

- **¼-20 tapped (standard)**
- 3/8-20 tapped
- Plain end
- Bullet nose end
- Bullet nose end ¼-20 tapped
- Customer specified

Tube end design (end 2):

- **¼-20 tapped (standard)**
- 3/8-20 tapped
- Plain end
- Bullet nose end
- Bullet nose end ¼-20 tapped
- Customer specified

MPI can manufacture your tubes with dead space on one or both ends to make metal removal easier. Note that there will be no magnetic protection in the dead space area and therefore should be located outside of the product flow area.

Dead space length:

- **No dead space, full magnetic tube (standard)**
- 2" dead space (slightly magnetic at end of tube)
- 4" dead space (no residual magnetism at end of tube)

Dead space location:

- Not applicable
- End 1
- End 2
- Both ends

MT Version 3.0 © MPI

MPI

683 Town Center Drive, Highland, MI 48356 | p. 248.887.5600 | f. 248.887.6100
info@mpimagnet.com | www.mpimagnet.com