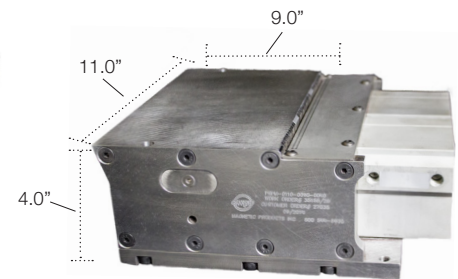
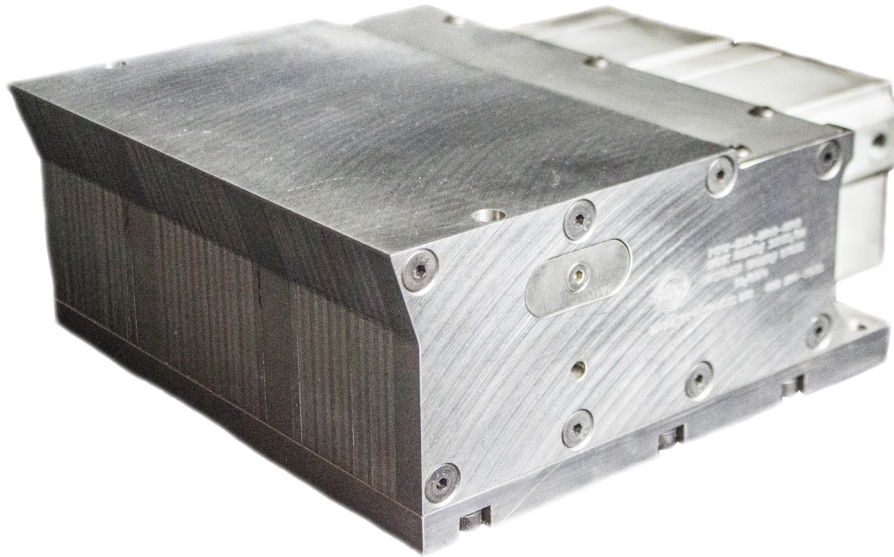




Pneumatic Switchable Permanent Magnet

Series: PSPM



Weight: 57 lbs.

PSPM Shear Force Test Results

Coupon Type	PSPM	Competing Electro-magnets	Holding Force Improvement
0.7mm thick-4" wide- Galvanized	310 lbs.	43lbs.	721% Increase
1.2mm thick-4" wide- Mild Steel.	425lbs.	100lbs.	425% Increase
1.2mm thick-9" wide- P&O Steel	660lbs.	260lbs.	254% Increase

Advantages

- Superior performance part holding of laser welded blanks
- Low cost operation – no electricity or hydraulics required to operate (pneumatic actuated)
- Extremely reliable – life cycle tested to > 5,000,000 cycles to date
- Shear holding force is 3X–7X stronger than competing electro-magnets
- Shear force is comparable to hydraulically switched magnets, but without the complexity
- Results in increased productivity and quality; reducing rejected parts
- Top clamping mass enhancers not required

Features

- Compact package with minimal footprint
- Magnet can be left “on” indefinitely
- No degaussing period, magnet switches on and off instantly
- Pneumatic operation – Switched “on” and “off” with a standard air supply (80 PSI required)
- Cool operation – no heat generated by use, therefore, no need for water cooling
- Durable precision ground working surface
- Sealed construction permits thorough cleaning and easy maintenance
- “Air bearing effects” enables low effort robotic crowding

*Specifications subject to change

Series PSPM Version 2.0 © MPI

MPI

683 Town Center Drive, Highland, MI 48356 | p. 800.544.5930 | f. 248.887.6100
 info@mpimagnet.com | www.mpimagnet.com