

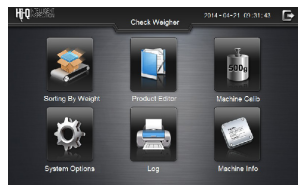


# Multi-sorting Checkweigh

Series: CW-HIQ-MS

Checkweighers quickly and accurately measure the weight of any packaged product as it is moving across the belt. These systems ensure quality control and customer satisfaction by verifying that products meet the target weight while providing cost savings through minimizing giveaway.

## Easy-to-Use Features



- Easy to setup and run with an intuitive color touch screen display
- Interface design features a full color touch screen system that is simple, intuitive and easy to operate
- Product database can store up to 100 unique products
- Data statistics function
- Data export - USB and Ethernet ports
- Automatic parameter adjustment, simply input the product parameters and weighing requirements to achieve the correct setting



- Replaces labor sorting improving efficiency & optimizing production process
- Accurate reject systems with multi-weight zone
- Various high-speed reject systems to enable rejection of multiple products

Model	CW-HIQ-MS-160-280	CW-HIQ-MS-230-350	CW-HIQ-MS-230-450	CW-HIQ-MS-300-500
Range	10~600g	20~2000g	20~2000g	20~5000g
Scale Interval	0.05g	0.1g	0.1g	0.2g
Accuracy (3 SD)	± 0.1g	± 0.2g	± 0.2g	± 0.5g
Maximum Speed	250pcs/min	200pcs/min	155pcs/min	140pcs/min
Belt Speed	70m/min	70m/min	70m/min	70m/min
Product Size	Width	150mm	220mm	220mm
	Length	200mm	250mm	350mm
Weigh Platform Size	Width	160mm	230mm	230mm
	Length	280mm	350mm	450mm
Operation Screen	7" touch LCD screen			
Product Storage Qty.	Up to 100			
Segment # of Sorting	Up to 9			
Sorter	Sorting (optional)			
Power Supply	AC220V (optional)			
Degree of Protection	IP54/ IP66			
Main Material	Stainless steel 304			

\*Specifications subject to change

CW-HIQ-MS Version 2.0 © MPI

**MPI**

683 Town Center Drive, Highland, MI 48356 | p. 800.544.5930 | f. 248.887.6100  
 info@mpimagnet.com | www.mpimagnet.com